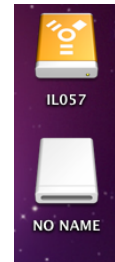


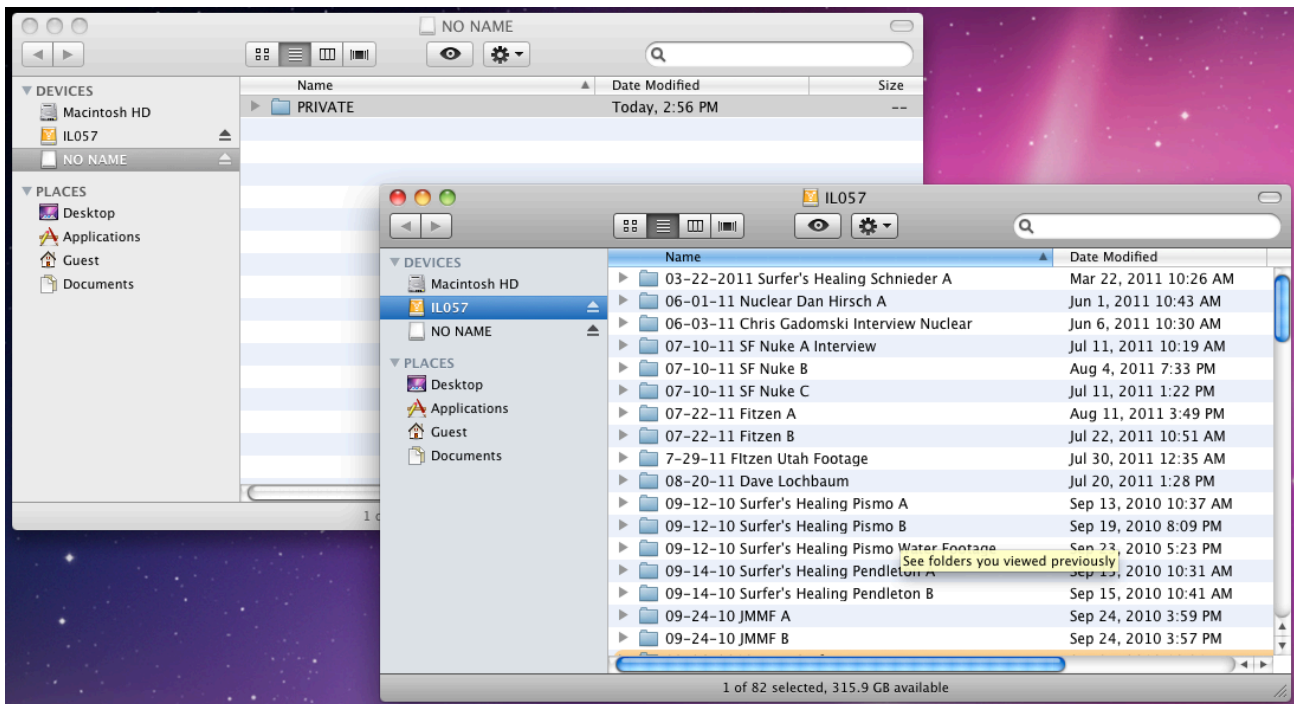
Backing Up a SD Card to a Hard Drive

NOTE: DO NOT DELETE, MODIFY, RENAME OR MOVE ANYTHING ON YOUR SD CARD. IT WILL RENDER YOUR SD CARD UNUSABLE. ANY OPERATIONS THAT YOU WANT TO DO ON YOUR SD CARD (INCLUDING FORMATTING) SHOULD BE DONE VIA THE CAMERA.

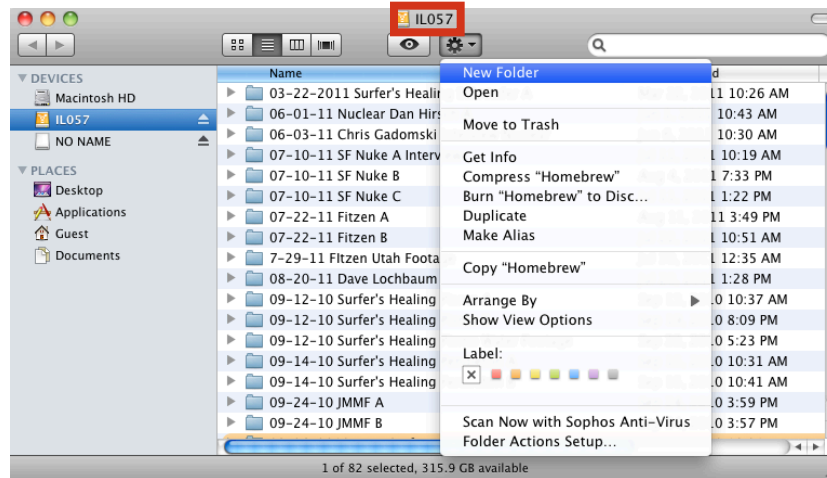
1.) You should see your hard drive (whatever you have named it, in this case "IL057") and your SD card which could be called "NO NAME" or "UNTITLED" or "Kingston" or "Canon" or possibly something else.



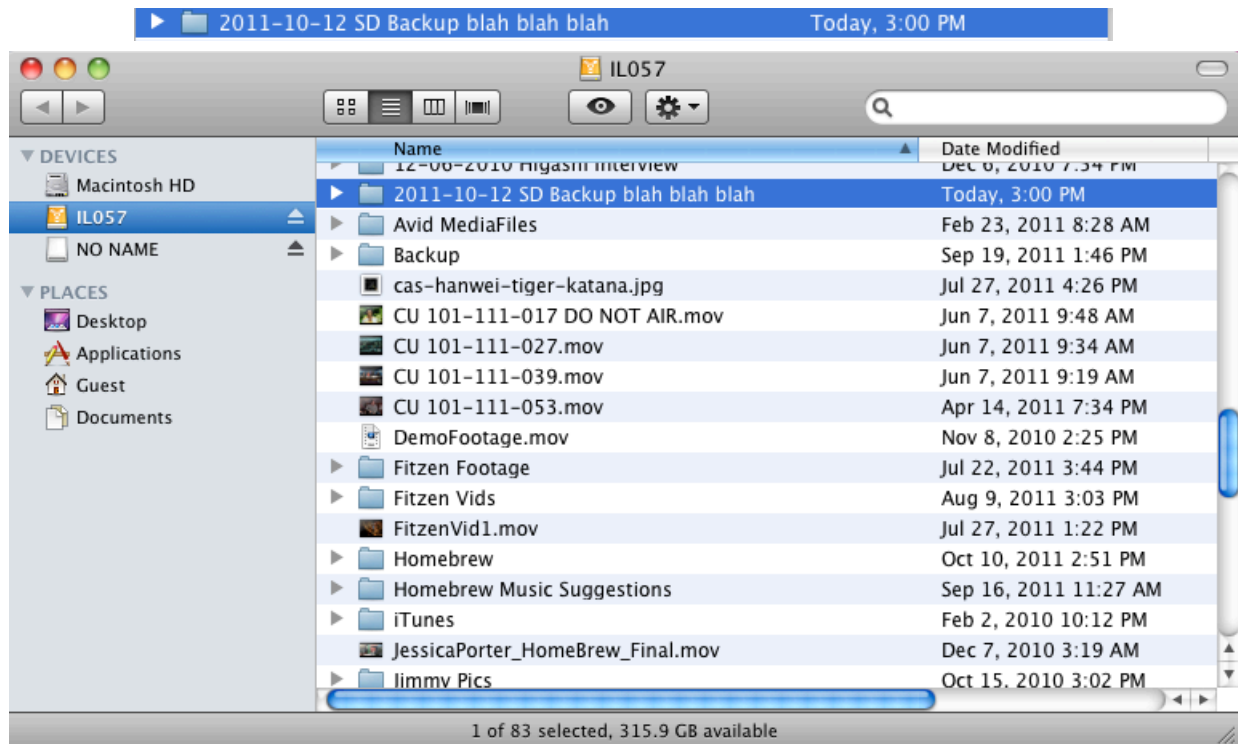
2.) Open your SD card and your Hard Drive by double-clicking on each of them.



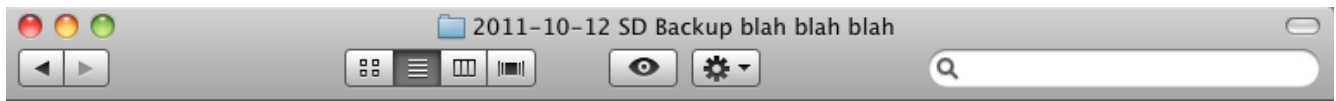
3.) Click on the gear in your hard drive window and select “New Folder.”
MAKE SURE YOU ARE NOT CREATING A FOLDER ON YOUR SD CARD
BY CHECKING THE NAME ON TOP.



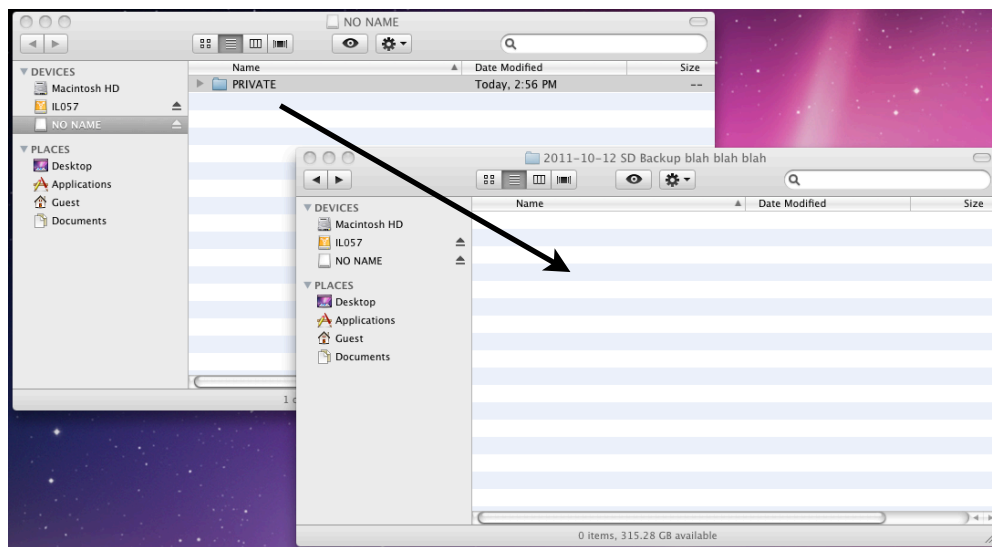
4.) Give the New Folder a name. In this example it is called “2011-10-12 SD Backup blah blah blah” which represents the date followed by a description of what’s on the card.



5.) Double click on your new folder. You can verify the correct folder is open by double checking the name on top.



6.) Drag the PRIVATE folder from your SD Card to your newly created folder. Depending on how much footage you have on your SD card, copying can take a while. NOTE: THIS SIMPLY COPIES THE “PRIVATE” FOLDER, IT DOES NOT MODIFY YOUR SD CARD.



7.) When copying is finished, “PRIVATE” should now be in your new folder. JUST LIKE WITH YOUR SD CARD NEVER MODIFY ANYTHING IN THIS FOLDER.

